



2828 Easy Street Suite 1, Placerville, CA, 95667 530.642.5260 www.edctc.org

**NOTICE OF INTENT  
TO ADOPT A NEGATIVE DECLARATION FOR THE  
GEORGETOWN AIRPORT LAND USE COMPATIBILITY PLAN (ALUCP)**

A public hearing has been scheduled during the following meeting of the Airport Land Use Commission. The ALUC anticipates adoption of the Negative Declaration and ALUCP during this meeting.

**El Dorado County Airport Land Use Commission Meeting**

Thursday, June 28, 2012 at 2 p.m.  
El Dorado County Board of Supervisors Chambers  
330 Fair Lane, Building A  
Placerville, California 95667

The public review period during which the El Dorado County Airport Land Use Commission (ALUC) will receive comments is from April 27, 2012 to Friday, June 1, 2012 at 3:00 p.m.

The El Dorado County Transportation Commission, which serves as the El Dorado County Airport Land Use Commission for western El Dorado County and the lead agency under the California Environmental Quality Act (CEQA), proposes to adopt a Negative Declaration for an Airport Land Use Compatibility Plan (ALUCP) for the Georgetown Airport. The proposed project is located near the community of Georgetown in an unincorporated area of El Dorado County (see Exhibit 1).

The proposed project involves updating the currently adopted Comprehensive Land Use Plan for the Georgetown Airport, which was adopted in June 1996. State law requires future land use development near airports to be consistent with compatibility criteria included in an ALUCP.

The Draft ALUCP identifies an Airport Influence Area, which is land within the airport vicinity that would be affected by the noise, safety, airspace protection, and overflight effects of airport operations. The AIA includes a variety of designated land uses associated with the El Dorado County General Plan including residential, commercial, public facility, agricultural, commercial, and open space (see Exhibit 1). The ALUCP includes policies and criteria for determining whether proposed future development or land use changes in the AIA would be compatible with aircraft operations. **Existing land uses will not be affected by ALUCP. No airport development is associated with the proposed project.**

The proposed Initial Study/Negative Declaration, which includes the Draft ALUCP as an attachment, is available for public review on the El Dorado County Transportation Commission (EDCTC) project website at <http://edctc.org/2/Airports.html>. The documents are also available for public review during regularly scheduled hours at the following locations from Friday, April 27 through Friday, June 1, 2012:

- El Dorado County Planning Services Department: 2850 Fair Lane Court, Building C, Placerville, CA 95667
- City of Placerville Planning Department: 3101 Center St, Placerville, CA 95667
- El Dorado County Library, Georgetown: 6680 Orleans Street Georgetown, CA 95634

- El Dorado County Library, Placerville: 345 Fair Lane, Placerville, CA 95667
- El Dorado County Library, Cameron Park: 2500 Country Club Drive, Cameron Park, CA 95682
- Georgetown Airport Office: 3501 Airport Road Placerville, CA 95667
- Cameron Airpark Airport Office: 3374 Mira Loma Drive, Cameron Park, CA 95682
- El Dorado County Transportation Commission Office: 2828 Easy Street Suite 1, Placerville, CA 95667

Comments may be submitted in writing to Woodrow Deloria, Associate Planner, and mailed to EDCTC at 2828 Easy Street, Suite 1, Placerville, California 95667. Comments also may be emailed to Mr. Deloria at: [wdeloria@edctc.org](mailto:wdeloria@edctc.org). All comments must be received by 4:00 p.m. on Friday, June 1, 2012.

A public workshop has been scheduled as follows:

**Georgetown Airport Land Use Compatibility Plan Workshop**

Thursday, May 3, 2012

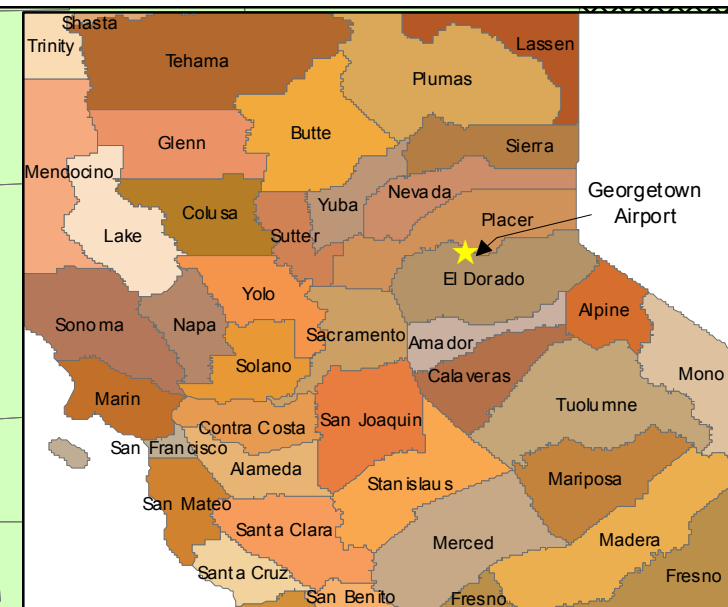
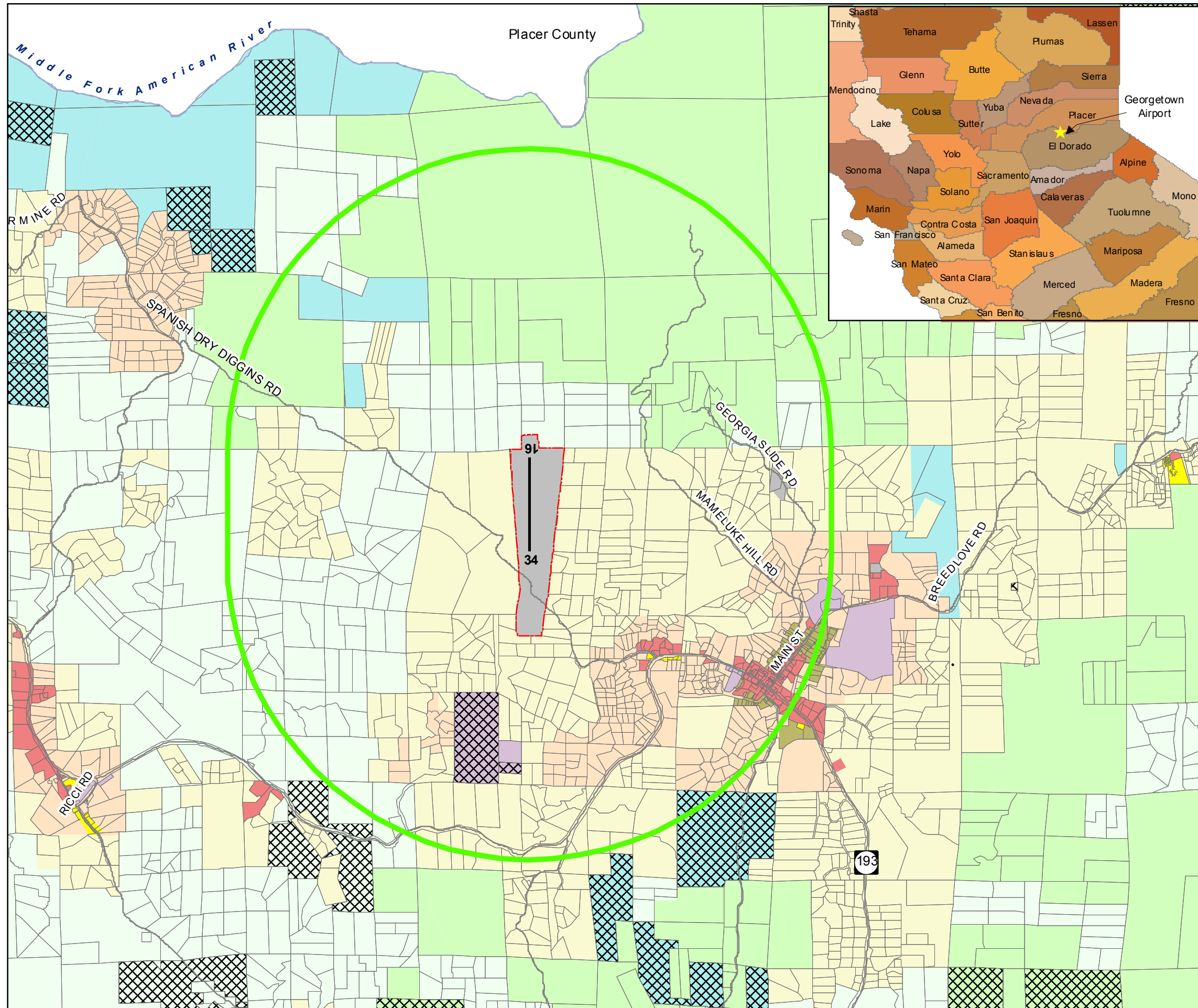
4:00 p.m. to 6:00 p.m.

Georgetown School

6530 Wentworth Springs, Georgetown, CA 95634

Interested persons should contact Mr. Woodrow Deloria, Associate Planner, at the El Dorado County Transportation Commission for questions regarding this document or the public workshop and public hearing.

**Notice must be posted at the County Clerk's Office for 30 days  
prior to public meeting action.**



# Georgetown Airport Land Use Compatibility Plan Site Location and Airport Influence Area

(March 2012 Draft)

- Map Feature Key**
- Parcels
  - Airport Boundary
  - Federal, State, and Tribal Lands
  - Major Roads
  - Airport Runway
  - Airport Influence Area

- Land Use Key**
- Agricultural
  - Business and Professional
  - Commercial
  - Residential - Low Density (1 Unit/5 Acres)
  - Residential - Medium Density (1 Unit/Acre)
  - Residential - High Density (1-5 Units/Acre)
  - Residential - Multi-Family (5-24 Units/Acre)
  - Residential - Rural (1 Unit/10 Acres)
  - Natural Resources
  - Open Space
  - Public Facilities
  - Research & Development
  - Industrial
  - Tourist Recreational

Map Source: El Dorado County Airport Land Use Commission  
Base Data Source: El Dorado County General Plan  
adopted July 2004; amended December 2009

